

CCL Cable clamps / cable clips

for C section rails C30



The cable clamps are characterised by a high clamping range and great flexibility. Ideally suited for strain relief on the C section rail with opening dimensions 16 - 17 mm. It offers flexible clamping ranges from 6 mm to 64 mm. The counter tray is secured by a locking mechanism and cannot slip out of the cable clamp.

Also available: sets consisting of [EMC shield clamp LFC](#) and matching [CCL cable clip](#).

RoHS
compliant

REACH
COMPLIANCE

Specifications

Material	Mild steel, galvanically zinc plated
Properties	vibration proof
Mounting options	Clamping

Advantages & benefits

- Quick and easy assembly
- For mounting on all common C30 rails with 16 - 17 mm opening dimensions

Product types & sizes

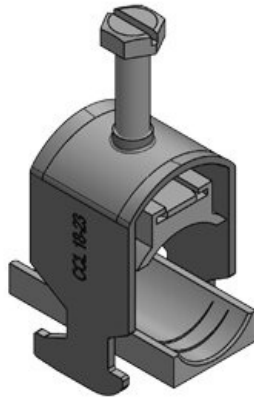
CCL 6-13



Part No.	32000	Clamping	1 x 6 - 13
EAN	4251269323	range	mm
	577		
Package quantity	25		
Length	24 mm		
Width	19 mm		
Height	31 mm		
Mounting height	51 mm		

CCL 12-19

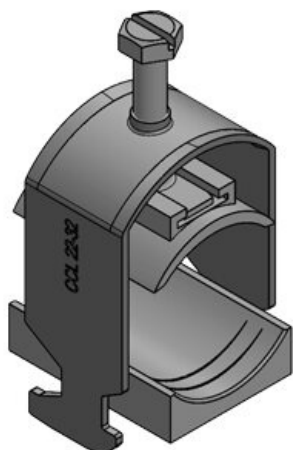
Part No.	32001	Clamping	1 x 12 - 19
EAN	4251269323	range	mm
	584		
Package quantity	25		
Length	24 mm		
Width	22 mm		
Height	36 mm		
Mounting height	56,7 mm		

CCL 18-23

Part No.	32002	Clamping	1 x 18 - 23
EAN	4251269323	range	mm
	591		
Package quantity	25		
Length	24 mm		
Width	26 mm		
Height	38 mm		
Mounting height	62 mm		

CCL 22-32

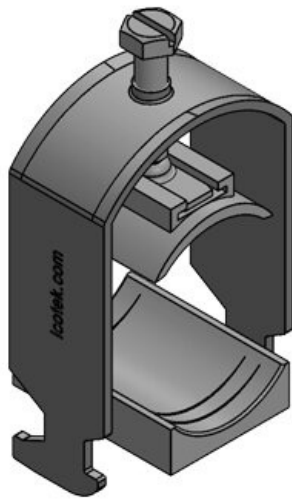
Part No.	32003	Clamping	1 x 22 - 32
EAN	4251269323	range	mm
	607		
Package quantity	25		
Length	24 mm		
Width	38 mm		
Height	52 mm		
Mounting height	72 mm		



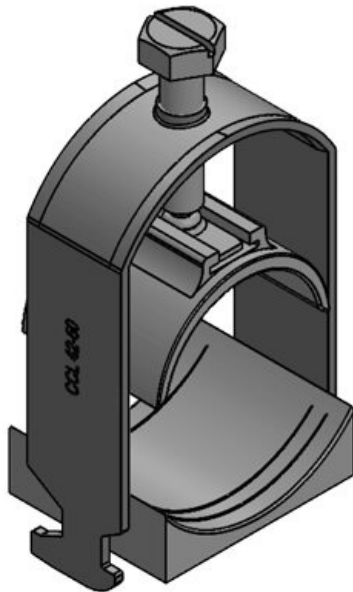
CCL 30-38

Part No.	32004	Clamping	1 x 30 - 38
EAN	4251269323	range	mm
	614		
Package quantity	25		
Length	24 mm		
Width	44 mm		
Height	62 mm		
Mounting height	78 mm		





Part No.	32005	Clamping	1 x 38 - 42
EAN	4251269323	range	mm
	621		
Package quantity	25		
Length	24 mm		
Width	48 mm		
Height	67 mm		
Mounting height	82 mm		



Part No.	32006	Clamping	1 x 42 - 50
EAN	4251269323	range	mm
	638		
Package quantity	25		
Length	24 mm		
Width	55 mm		
Height	83 mm		
Mounting height	101 mm		

Part No.	32007	Clamping	1 x 50 - 64
EAN	4251269323	range	mm
Package quantity	25		
Length	24 mm		
Width	69 mm		
Height	98 mm		
Mounting height	116 mm		

